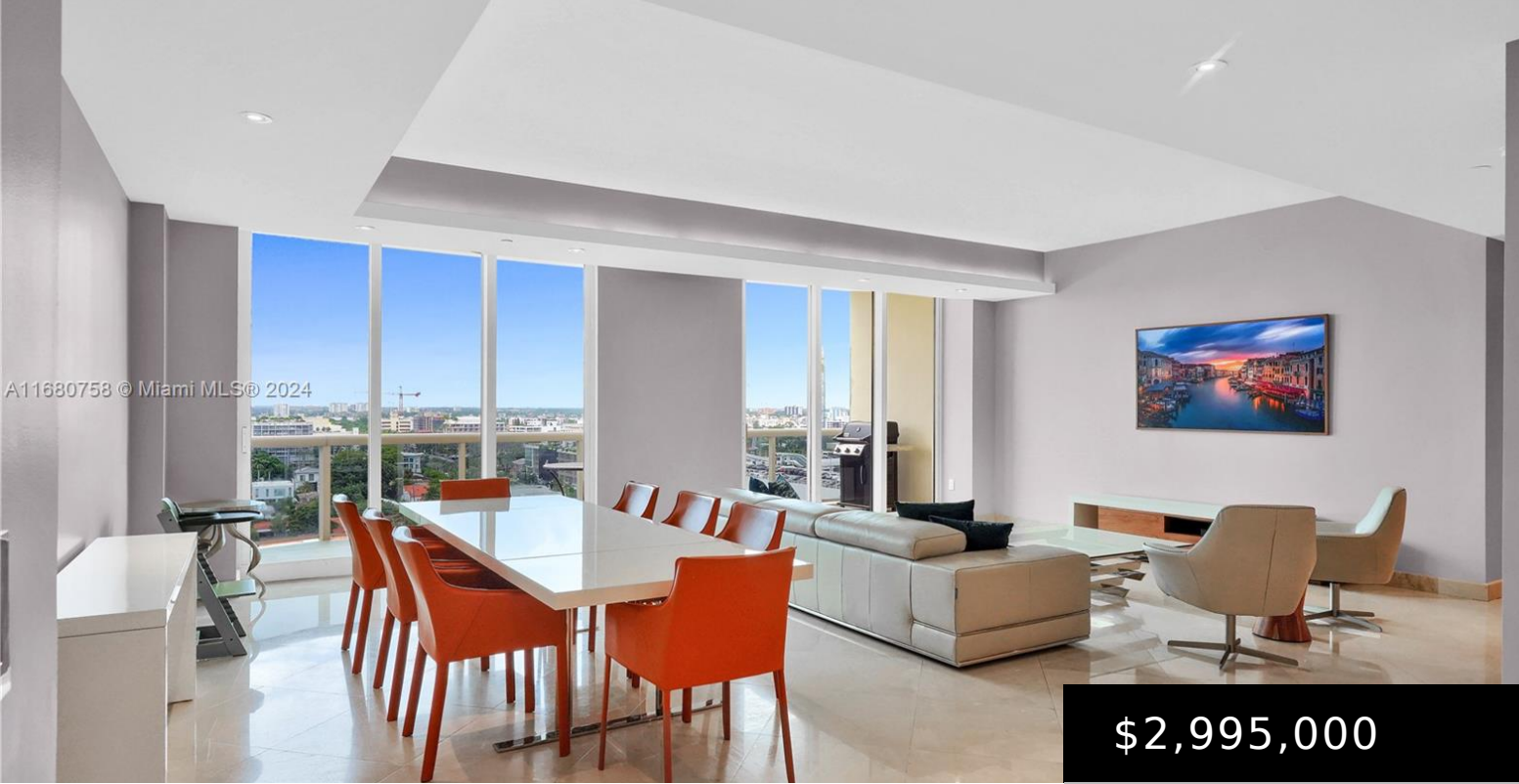


A11680758 © Miami MLS® 2024



\$2,995,000

9559 COLLINS AVE SPH-FG

<https://miamiluxuryhomes.org>

SOLIMAR CONDO UNIT SPH-F UNDIV 0.00293% INT IN COMMON ELEMENTS OFF REC 19719-307 Discover luxury living in this Bal Harbor penthouse, featuring 10ft ceilings and 2,750 sf of elegantly designed space with 3 bedrooms, an office, and 3 full bathrooms. Enter through your private elevator to an open-concept layout showcasing unobstructed views of downtown Miami [...]

- 3 beds
- 4 baths
- Condominium
- Residential
- Active
- 2760 sq ft

Basics



Category: Residential

Status: Active

Bathrooms: 4 baths

Floors: 12 floors

Year built: 2001

Subdivision Name: SOLIMAR CONDO

Type: Condominium

Bedrooms: 3 beds

Half baths: 1 half bath

Area: 2760 sq ft

View: City

County: Miami-Dade

Building Details

Architectural Style: HighRise,Penthouse

Covered Spaces: 2

Floor covering: Marble

Construction Materials: Block

Garage Spaces: 2

Amenities & Features

Pool Features: Heated

Parking Features: Covered,TwoOrMoreSpaces,Valet

Security Features:

DoorMan,ElevatorSecured,SecurityGuard

Patio & Porch Features: Balcony,Open

Accessibility Features:

AccessibleElevatorInstalled

Association Amenities: BusinessCenter,Clubhouse,FitnessCenter,Pool,Sauna,SpaHotTub,Trails,Trash,Elevators

Waterfront Features:

IntracoastalAccess,OceanAccess

Cooling: CentralAir

Exterior Features: Balcony

Furnished: Negotiable

Heating: Central

Interior Features:

Bidet,BuiltInFeatures,DiningArea,SeparateFormalDiningRoom,EntranceFoyer,KitchenDiningCombo,LivingDiningRoom,SeparateShower,WalkInClosets,Elevator

Appliances:

Dryer,Dishwasher,Microwave,Refrigerator

Nearby Schools

Elementary School: Bay Harbor

High School: Miami Beach

Expenses, Fees & Taxes

Association Fee: \$3,959

Tax Annual Amount: \$11,944

Tax Year: 2023



Miscellaneous

Association Fee Frequency: Monthly **List Office Name:** Fisherman Group FL LLC

Listing Terms: Cash,Conventional

