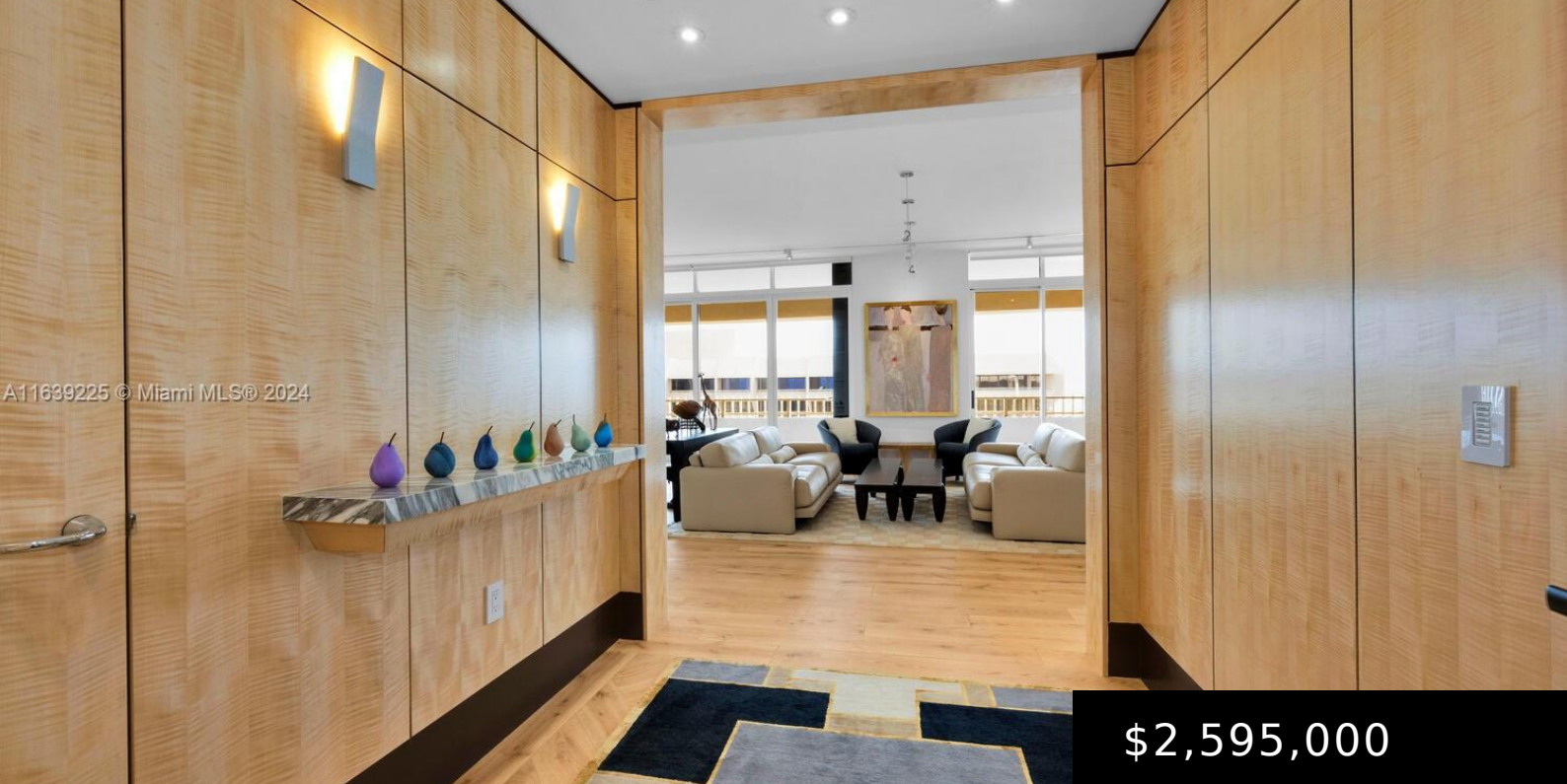


A11639225 © Miami MLS® 2024



\$2,595,000

1 GROVE ISLE DR APH09

<https://miamiluxuryhomes.org>

GROVE ISLE CONDO UNIT A-PH-9 UNDIV .2640% INT IN COMMON ELEMENTS OFF REC 10279-195 10590-2766 OR 19409-2361 1200
1 Truly one of a kind and rarely available Grove Isle Building One penthouse (2,614 sq ft) with 9 ½ ft. ceilings, NE corner wrap-around balcony with spectacular unobstructed views from every room of Biscayne Bay, Downtown [...]

- 2 beds
- 3 baths
- Condominium
- Residential
- Active
- 2614 sq ft

Basics

Category: Residential

Status: Active

Bathrooms: 3 baths

Floors: 1, 18 floor

Year built: 1979

Subdivision Name: GROVE ISLE CONDO

Type: Condominium

Bedrooms: 2 beds

Half baths: 1 half bath

Area: 2614 sq ft

View: Bay, Water

County: Miami-Dade County



Building Details

Architectural Style: HighRise,Penthouse

Covered Spaces: 2

Levels: One

Construction Materials: Block

Garage Spaces: 2

Floor covering: Carpet

Amenities & Features

Pool Features: Association,Heated

Security Features: ClosedCircuitCameras,DoorMan,SecurityGuard

Association Amenities:

Clubhouse,CommunityKitchen,FitnessCenter,Library,Playground,Pool,Sauna,SpaHotTub,Storage,Trails,Trash,VehicleWashArea,Elevators

Utilities: CableAvailable

Cooling: CentralAir,Electric

Furnished: Unfurnished

Interior Features:

WetBar,BedroomonMainLevel,ClosetCabinetry,DualSinks,EntranceFoyer,EatinKitchen,LivingDiningRoom,MainLivingAreaEntryLevel,Pantry,WalkInClosets

Appliances: BuiltInOven,Dryer,Dishwasher,ElectricRange,ElectricWaterHeater,Disposal,Microwave,Refrigerator,Washer

Parking Features:

Assigned,Guest,Valet

Patio & Porch Features:

Balcony,Open

Waterfront Features:

BayFront,NoFixedBridges

Window Features:

Blinds,Drapes

Exterior Features:

Balcony,StormSecurityShutters

Heating: Central,Electric

Laundry Features:

LaundryTub

Nearby Schools

Middle Or Junior School: Ponce De Leon

High School: Coral Gables

Elementary School: Keybiscayne

Expenses, Fees & Taxes

Association Fee: \$3,452

Tax Year: 2023

Tax Annual Amount: \$15,583

Miscellaneous

Association Fee Frequency: Monthly

Listing Terms: Cash,Conventional

List Office Name: Brown Harris Stevens

Direction Faces: Northeast

